

Thank you for choosing Lifecord. Please read this instruction manual carefully before using this product and keep it for future reference.

Lifecord is a kill cord providing a tethered connection between a boat/engine's ignition kill switch and the boat's pilot. It is designed to trigger an audible and visual warning alarm should it be connected to the kill switch but not the pilot.

WARNING Always wear a kill cord when driving a boat fitted with an engine ignition kill switch. If the pilot is ejected from the boat's helm and the pilot is not wearing a kill cord the boat's engine will continue to run which can cause serious injury or death.

Included in the bag.

Lifecord comprises four main parts, the vessel switch, battery enclosure, clasp and key, all of which are connected by a wire cord. Also included in the bag are seven clip heads, one toggle guide (2b), one clip head extraction tool and one lifejacket key.

Step 1 – select a clip head

Choose the clip head that will fit the boat/engine's kill switch to which Lifecord will be connecting. The clip heads are number stamped 1 - 7 and correspond to the boat/engine's kill switch manufacturers' list below. See diagram Step 1. If your boat/engine is not listed below please contact your retailer for assistance.

- | | | |
|---|--|--------------------------|
| 1 Honda | 3 Mercury / Mariner (toggle switch type) | 6 OMC Johnson / Evinrude |
| 2a Mercury / Mariner (toggle switch type) | 4 OMC Evinrude | 7 Yamaha |
| 2b Toggle Guide (toggle switch type) | 5 Suzuki | |

Step 2 – fit the chosen clip head to Lifecord's vessel switch. (For Mercury / Mariner toggle kill switch types see also Step 3)

Fit the clip head into the vessel switch ensuring the plunger passes through the hole in the clip head. Squeeze the clip head's locking legs together to ensure they both enter the vessel switch simultaneously. Push the clip head firmly into place ensuring the locking legs spring back outwards, clicking into the slots in the vessel switch, locking it into place. See diagram Step 2

NB Under normal use it is intended that once fitted, the chosen clip head is left permanently locked into Lifecord's vessel switch. Should for any reason the clip head need extracting, use the clip head extraction tool provided to squeeze the clip head's locking leg catches back inside the vessel switch, enabling the clip head to be extracted. See diagram 8. Do not reuse the extracted clip head, replacements are available from our authorised distributors.

Step 3 – additional instructions for clip head (2a) Mercury / Mariner toggle switch type only, otherwise go to Step 4

For the Mercury/Mariner toggle kill switch type, a secondary part, toggle guide (2b), requires fitting in conjunction with the clip head (2a).

While inserting the clip head (2a) into Lifecord's vessel switch as described in Step 2, align the receiving hole in the toggle guide (2b) with the plunger as it passes through the hole in the clip head (2a) and into its loop. Push the toggle guide (2b) onto the plunger.

Step 4 – connecting Lifecord to the boat/engine's kill switch.

Push Lifecord's vessel switch into the boat/engine's kill switch with the clip head's flat face innermost. Lifecord will emit three audible tones and flash simultaneously to confirm the connection. See diagram Step 4. Lifecord is designed to emit a series of audible tones and simultaneously flash orange LEDs every 10 seconds until it is connected to the pilot. The audible tones escalate in volume in 10-second intervals, the maximum volume being at 30-second intervals at which point it restarts its warning alarm cycle again. These audible and visual warnings are intended to assist awareness in both pilot and crew that Lifecord is not connected to the pilot. **NB** Under normal use, always hold the vessel switch to push on and pull off Lifecord from the boat's kill switch.

WARNING Check that your boat/engine's kill switch is working properly each time the boat is used and that your Lifecord kill cord has an unobstructed route to pull freely from the boat/engine's kill switch at any angle should the pilot to which it is attached be ejected from the helm.

Step 5 – connecting Lifecord to the boat's pilot.

Lifecord should be worn around the pilot's leg just above the knee using the clasp and key to provide the connection. Before wearing, adjust the position of the key on the coiled section of the cord to ensure that when connected to the clasp it creates a loop that is comfortable to wear and equally provides enough tension when worn to silence the warning tones and hold around the leg without slipping. Adjustment is easily achieved by spinning the key along the coils of the wire cord until it reaches the desired position. The closer the key is to the clasp the smaller the leg loop.

Wrap the clasp round the leg until it meets the key. Enter the key into the clasp at a 90-degree angle to the clasp, release the key and allow it to straighten through 90 degrees to the tensioned position, as shown in diagram Step 5. Please note the key is designed to insert one-way only into the clasp. Best wearing tip: whichever leg you wear it on, have the key on the right and the clasp on the left with the clasp's key hole opening and thumb catch facing uppermost.

NB Once the key is inserted into the clasp and under tension from being worn the alarm warnings will stop.

Step 6 – pilot disconnection.

Simply reverse the connection procedure by lifting the key back through 90 degrees. Depress the clasp's thumb catch to allow the key to be extracted from the clasp. See diagram Step 6. Lifecord will alarm until either disconnected from the boat/engine's kill switch or reconnected to the pilot.

Replacing the battery.

Lifecord is fitted with a CR2 3v lithium battery. When it reaches low power a yellow LED flashes once every five seconds when Lifecord is in use indicating the battery requires replacing. To replace the battery, undo the two screws from the battery hatch, then remove the hatch itself to expose the battery. When inserting the new battery ensure it is orientated correctly with the battery terminals as per the diagram inside the battery housing. Apply a light coating of petroleum jelly along the seal edge and in the screw fixing holes before re-fitting the battery hatch. Tighten the screws until they are tight enough to fully compress the battery hatch to the enclosure. Do not over tighten as this could cause distortion to the battery hatch. (Screw torque value no more than 10ncm). See diagram Step 7. It is important that the battery is checked before each use of Lifecord to ensure that it does not need replacing (Lifecord will not operate properly without a working battery). **NB** See battery side for disposal/safety information.

Lifejacket key

Lifecord is intended to be worn around the pilot's leg however, the lifejacket key offers an alternative method of securing Lifecord to a vessel's pilot should the preference of the pilot be to wear their kill cord connected to their lifejacket. The lifejacket key can be permanently attached to a secure anchor point on the pilot's lifejacket. Using this method to wear Lifecord the clasp connects to the lifejacket key in the same way as described in Step 5. When the clasp is connected to the lifejacket key, Lifecord ceases to emit its warning alarms.

NB When using the lifejacket key, the lifejacket itself must be worn by the vessel's pilot in accordance with its manufacturer's instructions. Ensure that the chosen anchor point on the lifejacket is strong and secure and provides no risk whatsoever of the lifejacket key becoming detached from the lifejacket should the pilot be ejected from the vessel, nor that its attachment interferes in any way with the lifejacket's own safe operation.

Product care.

Lifecord is waterproofed to IP67 rating. To clean, wash in fresh water using mild detergent only if necessary, do not use solvents or caustic cleaning agents. Store out of direct sunlight. It is important that the user checks it for signs of accidental damage or wear before each use. Operating temperature parameters -20°C to +50°C. Please ensure that this product is checked at least once every 12 months after initial purchase by one of our authorised distributors.

WARNING Lifecord is a kill cord, a piece of safety equipment that requires being maintained in good condition, its integrity being key to its function as a kill cord. This product contains magnets. Do not use the product around items that are sensitive to or affected by magnetic fields.

WARNING Alarm limitations: The alarm is loud at its highest volume however it still may be inaudible above noise from stereos, engine noise or any other general noise within its surroundings and may not be heard. People with impaired hearing may also not hear its tones.

Warranty – We offer a one-year manufacturer's guarantee - see www.cordsafe.co.uk for details, terms and conditions, or to obtain a hard copy please write to Cordsafe Ltd, Unit 8F Parkway Farm, Dorchester, Dorset DT1 3AR

Please note that we may make changes to our product at any time. The images on our instructions and labels are for illustrative purposes only and your product may vary slightly from these images.

UK patent GB2530121B Patent pending US, AU, CA, JP, NZ & European Patent Office. Additional patents pending. LIFECORD is a registered trademark in the United Kingdom UK3195087 & pending International Trade Mark. © 2018 Cordsafe Ltd.

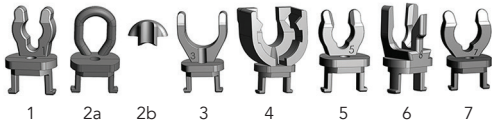
Manufacturer of Lifecord: Cordsafe Ltd, Unit 8F, Parkway Farm, Poundbury, Dorchester, Dorset DT1 3AR United Kingdom www.cordsafe.co.uk



INSTRUCTIONS AND SAFETY INFORMATION - GB

Also view 'User Quick Guide' video - cordsafe.co.uk

Step 1. Choose clip head that fits engine/boat's kill switch

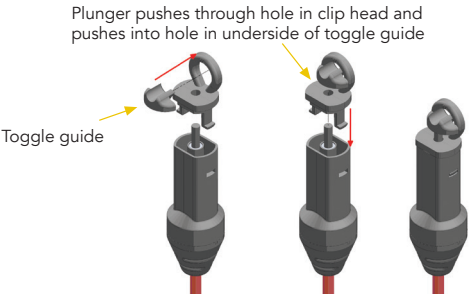


1. Honda
- 2a. Mercury/Mariner (toggle switch type)
- 2b. Mercury toggle guide (toggle switch type)
3. Mercury/Mariner/Tohatsu
4. OMC Evinrude
5. Suzuki
6. OMC Johnson/Evinrude
7. Yamaha

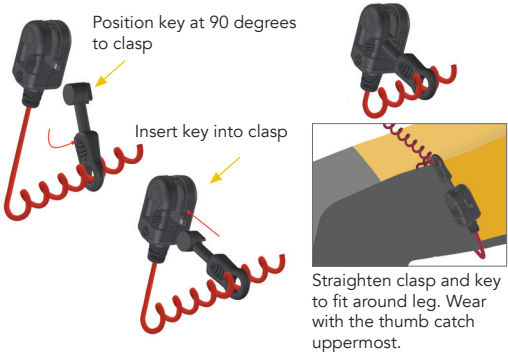
Clip head

Number

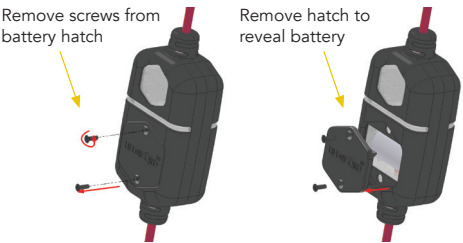
Step 3. Fitting clip head 2a and toggle guide 2b for Mercury/Mariner boat/engine toggle kill switch types



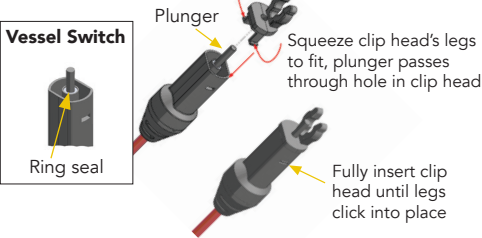
Step 5. Connecting Lifecord to the pilot's leg



Step 7. Replacing the battery

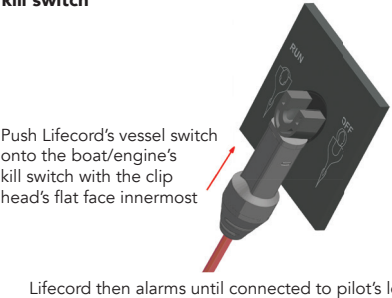


Step 2. Fit clip head to Lifecord's vessel switch



If the boat/engine's kill switch is the Mercury/Mariner toggle switch type go to **Step 3** otherwise go to **Step 4**.

Step 4. Connecting Lifecord to the boat/engine's kill switch



Step 6. Disconnecting Lifecord from the pilot's leg

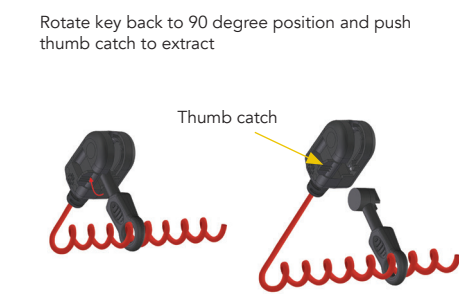


Diagram 8

NB Once fitted, the clip head is designed to be left permanently in place.

If for any reason it does need replacing use the clip head extraction tool to remove

Clip head extraction tool

